

A-64

Pt of NW 32-20-30 &  
Pt E 1/2 NE 31-20-30

Part of Orchard Addition to Town  
of

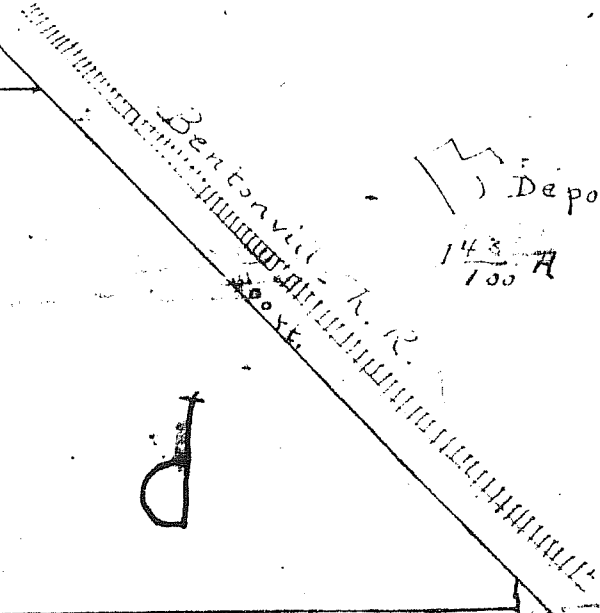
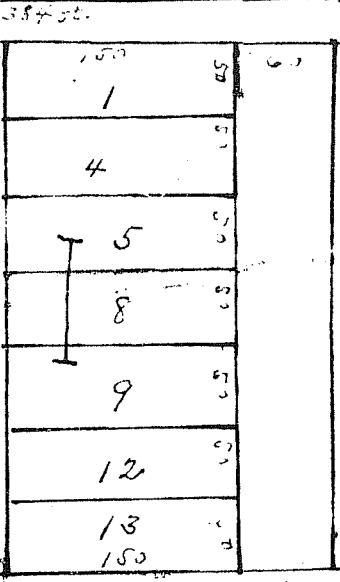
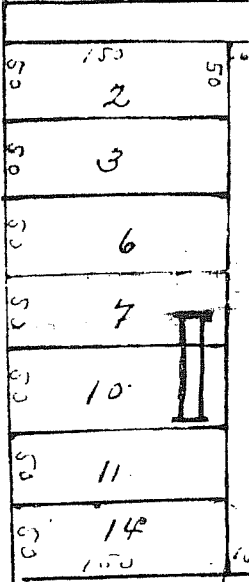
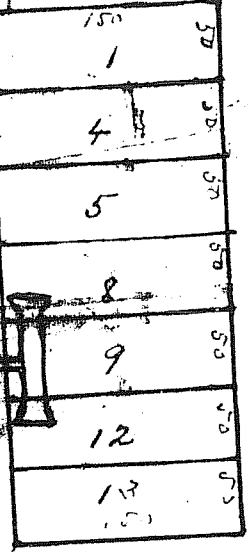
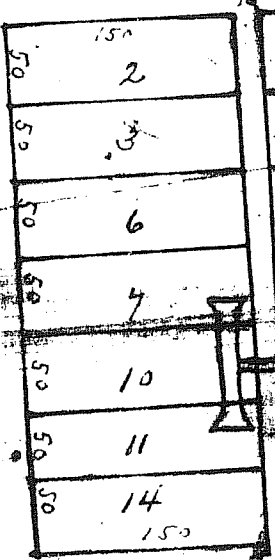
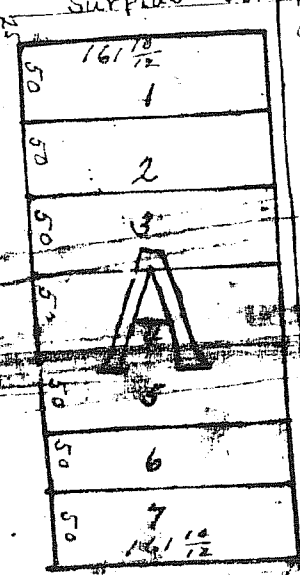
Bentonville  
Arkansas.

Armstrong's Line

D.N. Armstrong's line  
Surplus strip 10 ft.

Armstrong Str.

38 ft.



ATCHISON STR.

STR.

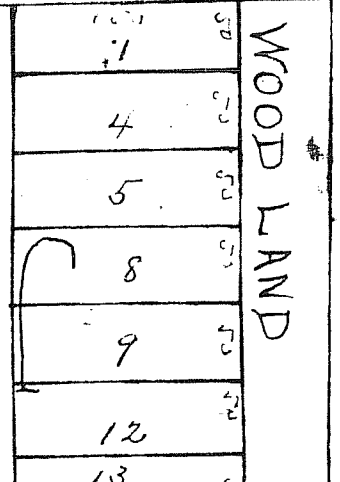
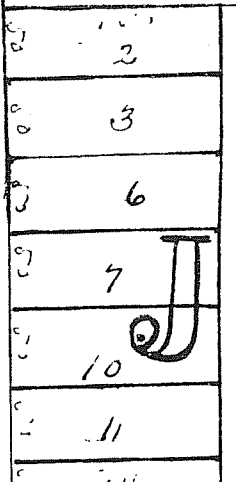
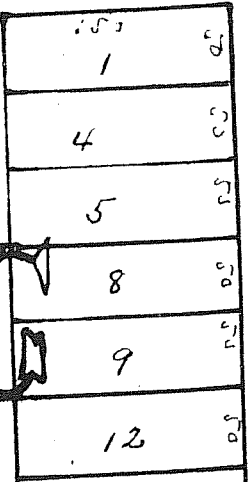
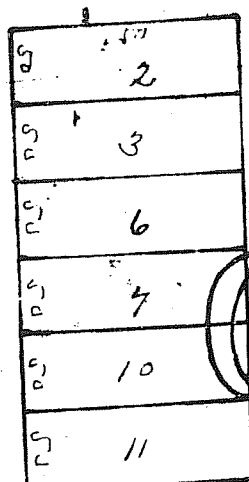
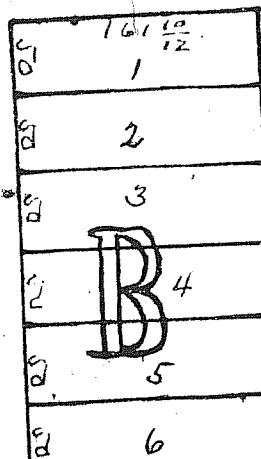
FAIR OAKS AVE

PARK Ave.

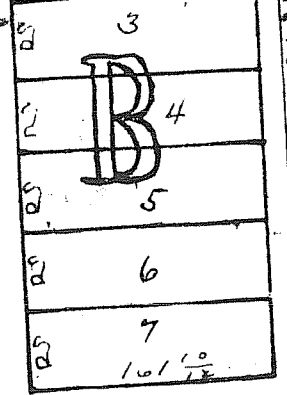
MORENCO AVE.

WOOD LAND

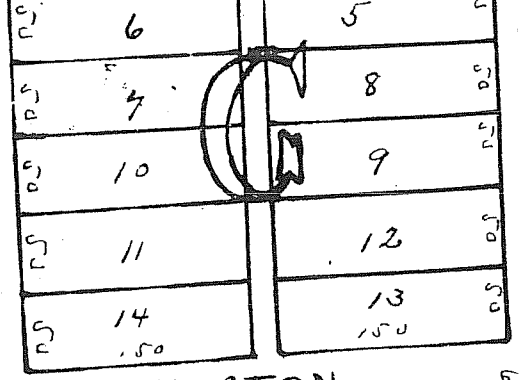
FAIR



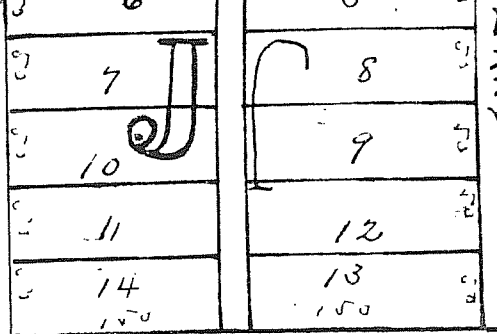
AVE



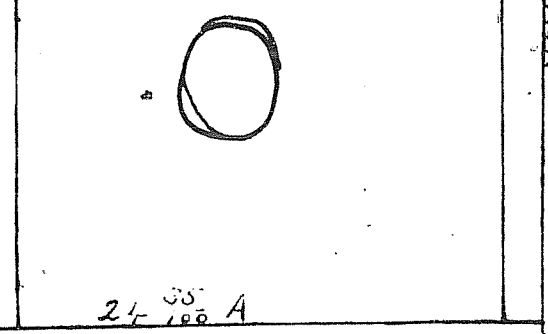
RK AVE



ICO AVE.

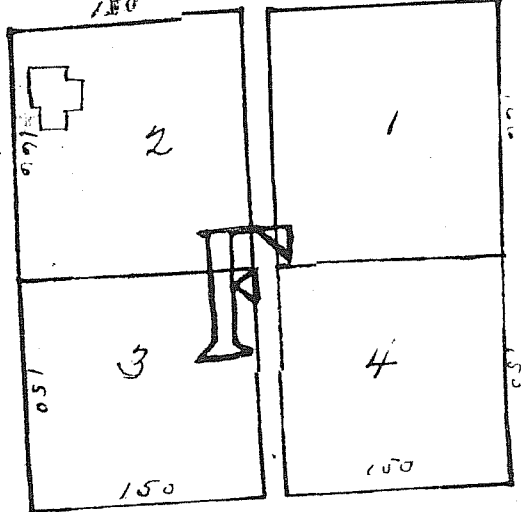
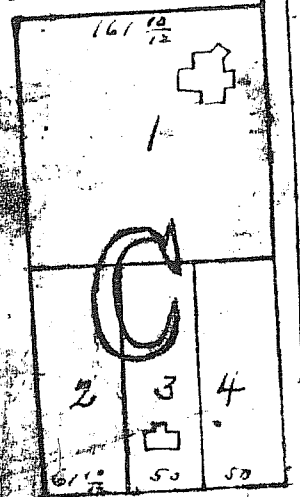


LAND

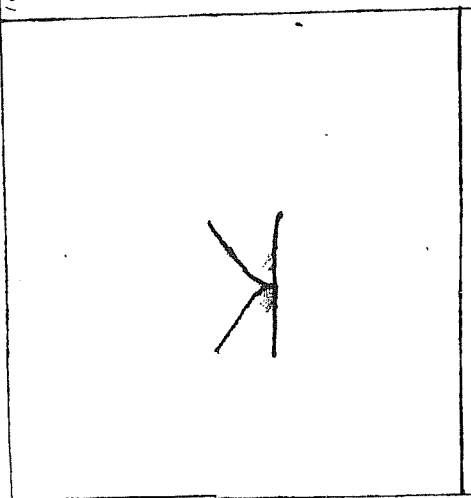


AIR

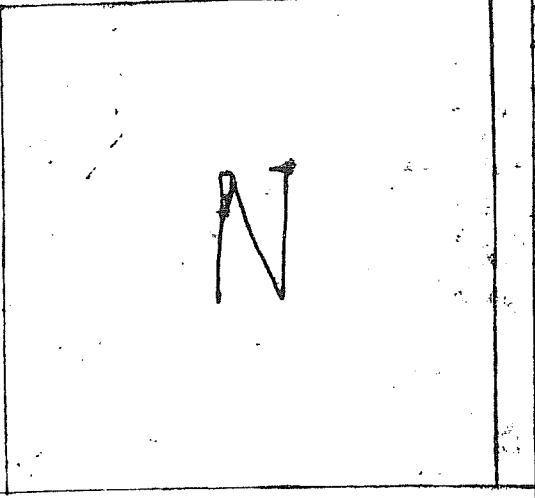
WASHINGTON



STR.

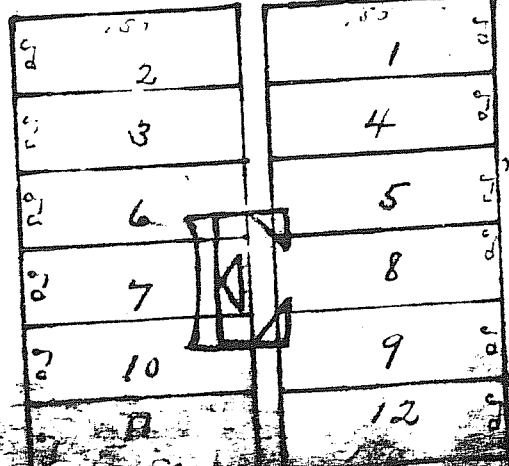
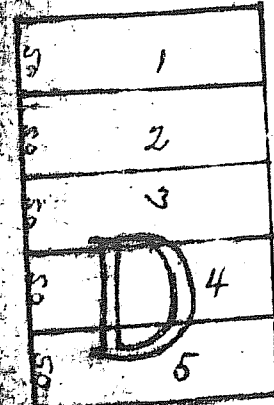


AVE.

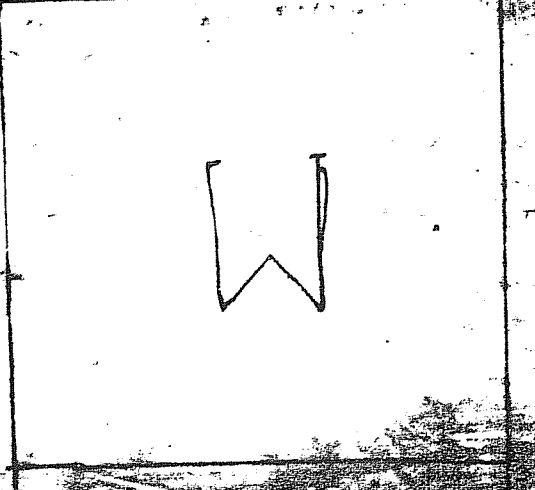
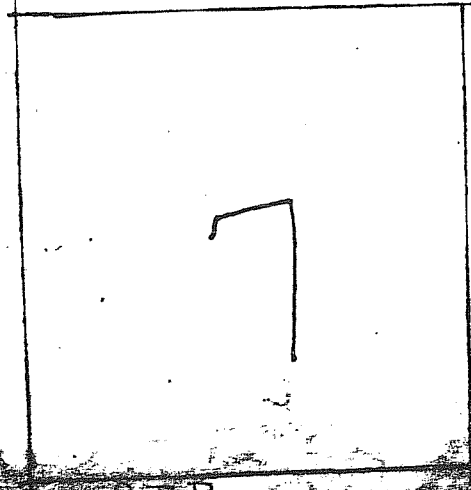


115' 4' MOUNT RVE

Adams Str.



STR



whole  
Plot contain  
45.44 AC

16