

OFFSITE WATER & SEWER EASMENT  
FROM NORMAN D. JR. & HELEN FAYE  
HEATHMAN - INSTRUMENT NO. 2000004213

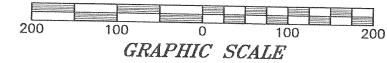
OFFSITE WATER & SEWER EASMENT  
FROM GLENN PARSON  
INSTRUMENT NO. 2000009005

P.O.B.  
NE CORNER  
SE 1/4, NE 1/4, SW 1/4,  
SECTION 28,  
T-18-N, R-30-W



**CURVE DATA  
CURVE "A"**

Δ = 90°14'02"  
T = 50.20 FT  
R = 50.00 FT  
L = 78.74'

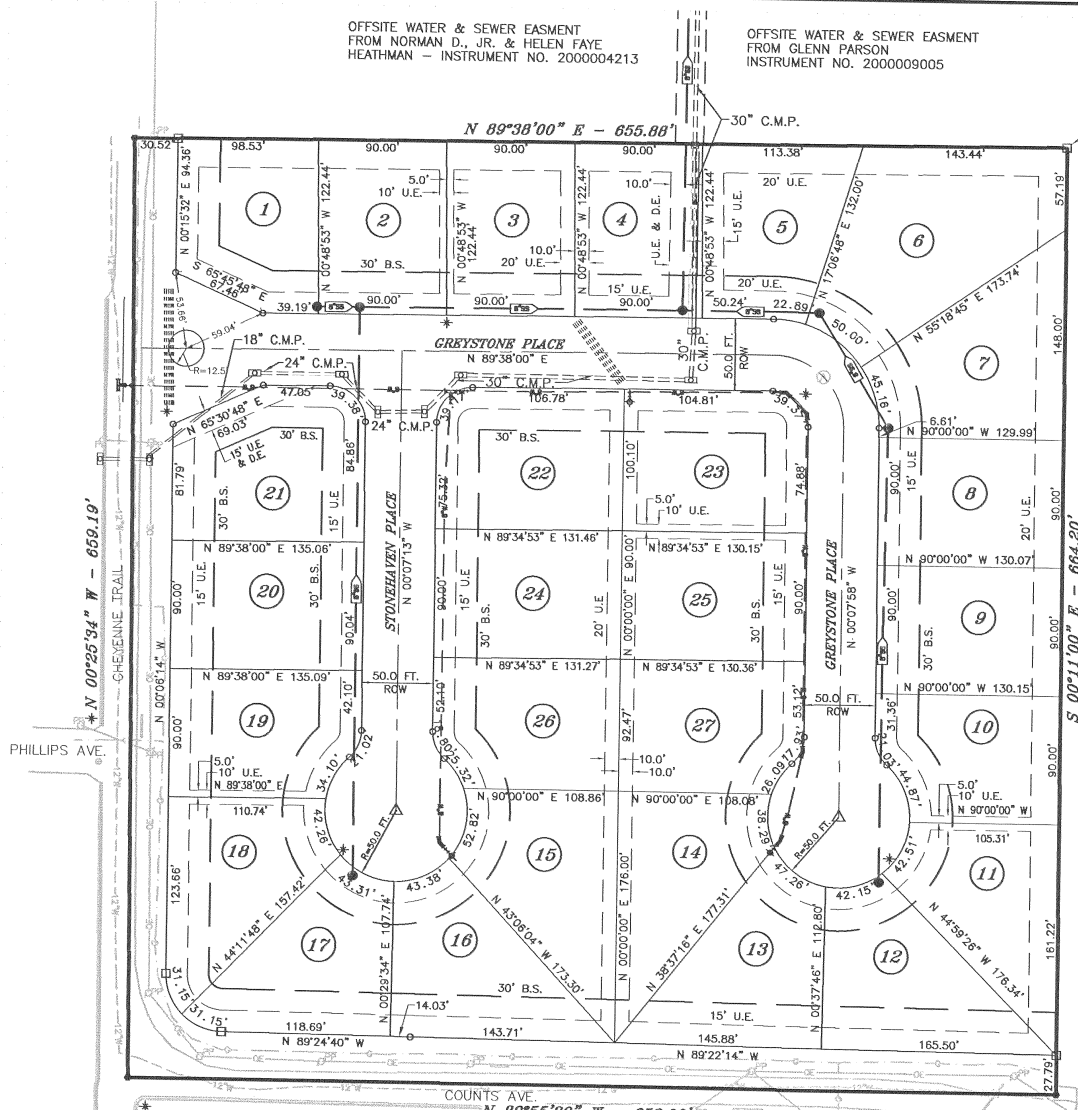


**NORTH**

ACREAGE - 9.94 Acres  
ZONING R-1

**LEGEND**

- SET CONCRETE MONUMENT
- SET IRON PIN
- FOUND IRON PIN
- ⊙ FOUND PIPE
- △ SET P.K. NAIL / RAILROAD SPIKE
- ▲ FOUND RAIL ROAD SPIKE
- +— WATER MAIN
- +— FIRE HYDRANT
- +— WATER TEE
- +— WATER VALVE
- +— SANITARY SEWER MAIN
- +— SANITARY SEWER MANHOLE
- +— STORM SEWER
- STORM SEWER DROP INLET
- U.E. UTILITY EASEMENT
- B.S. BUILDING SETBACK
- ⊠ STREET LIGHT WITH 6,800 LUMENS



**FINAL PLAT NOTES:**

- 1.) NO ACCESS WILL BE ALLOWED TO COUNTS AVENUE FROM LOTS 12, 13, 16, & 17.
- 2.) NO ACCESS WILL BE ALLOWED TO CHEYENNE TRAIL FROM LOTS 1, 18, 19, 20, & 21.
- 3.) THIS PROPERTY IS NOT WITHIN THE 100 YEAR FLOOD PLAIN AS SHOWN ON THE FEDERAL EMERGENCY MANAGEMENT AGENCY FLOOD INSURANCE RATE MAP PANEL #05143C0017 C, DATED SEPTEMBER 18, 1991.
- 4.) SIDEWALKS WILL BE REQUIRED AS LOTS ARE DEVELOPED.
- 5.) THE PROPERTY OWNER'S ASSOCIATION WILL BE RESPONSIBLE FOR MAINTAINING THE ISLAND AT THE ENTRANCE OF GREYSTONE PLACE.

16-98

Professional Land Planners  
**Landtech Engineering, Inc.**  
120 W. Emma Ave.  
Springdale, Arkansas 72765  
Telephone: (501) 756-2772

**FINAL PLAT  
GREYSTONE SUBDIVISION  
SPRINGDALE, ARKANSAS**

Drawn By: <i>Kyle</i>	SCALE: 1" = 60'	DATE: FEBRUARY 2000	SURVEY DATE:
Design By: <i>W.O.# 985009</i>		Drawing 985009.FIN.DWC	F.R.
Checked By:	DATE OF APPROVAL:	Sheet 2 of 2	