

Timber Trails Block 1
A subdivision of pt of S.W. 1/4 N.W. 1/4 Sec. 8
Twp. 19 N. R. 29 W. Rogers, Benton Co. Ark.

We Vick Will and Mildred E. Will husband and wife are the sole owners of the land here with described and we have had the same subdivided into lots and a 50ft. street as shown and we hereby dedicate the said street to public use forever.

Witness
our hands this 12th day of September 1958



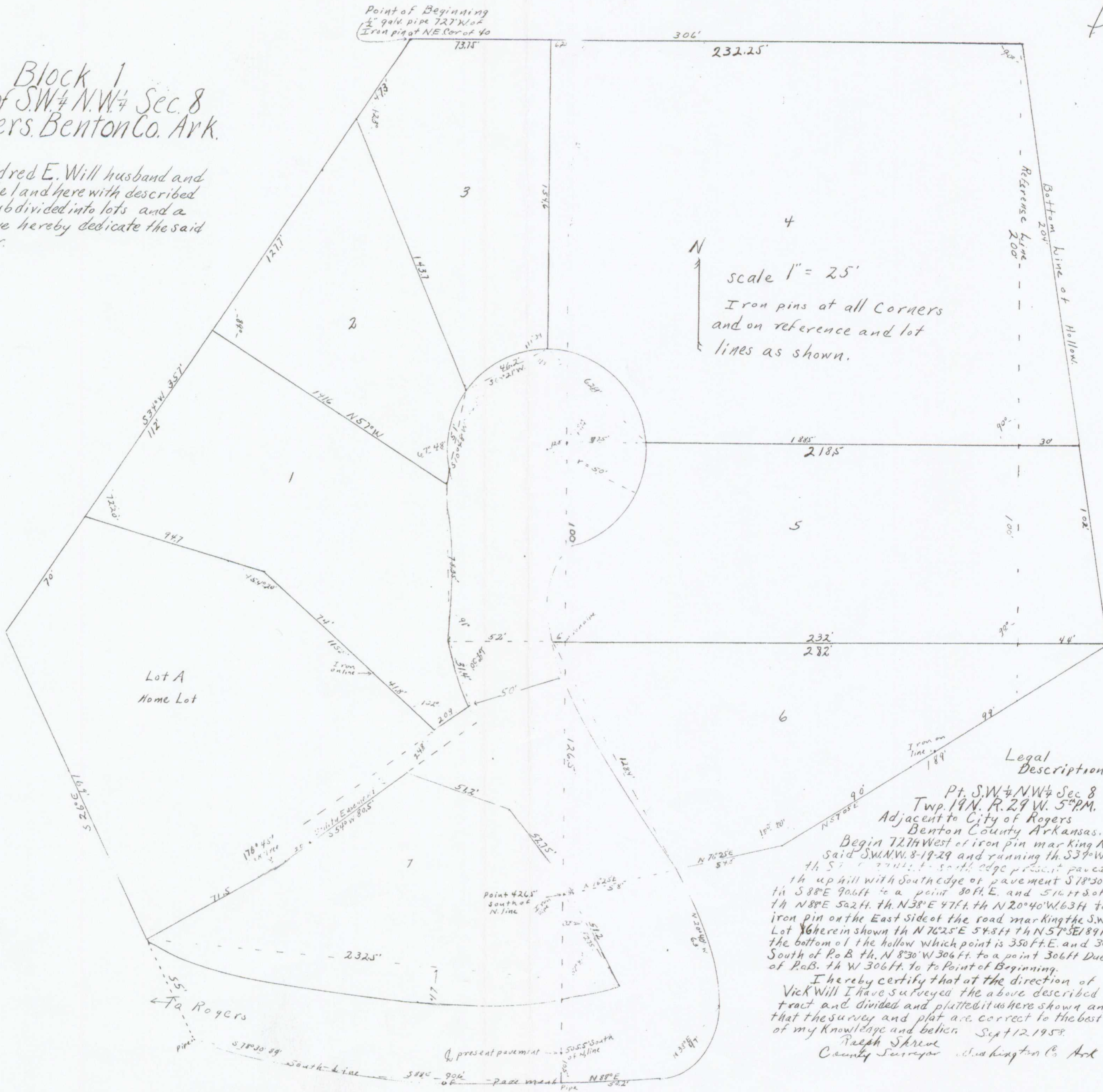
Approved

City Planning Comm.

Accepted

9/15/58
C. C. Furukawa
Chairman

City Council



scale 1" = 25'
Iron pins at all corners and on reference and lot lines as shown.

Legal Description

Pt. S.W. 1/4 N.W. 1/4 Sec. 8
Twp. 19 N. R. 29 W. 5th P.M.
Adjacent to City of Rogers
Benton County Arkansas.
Begin 72.74 West of iron pin marking NE. Cor. said S.W. 1/4 N.W. 1/4 Sec. 8-19-29 and running th. S 39° W 351 ft. th. S 77° 42' E 274 ft. to south edge present paved road th. up hill with south edge of pavement S 18° 30' E 89 ft. th. S 88° E 90.6 ft. to a point 80 ft. E. and 516 ft. S. of P.O.B. th. N 88° E 52 ft. th. N 38° E 47 ft. th. N 20° 40' W 6.3 ft. to an iron pin on the East side of the road marking the S.W. Cor. of Lot 16 herein shown th. N 76° 25' E 54.8 ft. th. N 57° SE 189 ft. to the bottom of the hollow which point is 350 ft. E. and 300 ft. South of P.O.B. th. N 8° 30' W 306 ft. to a point 306 ft. Due East of P.O.B. th. W 306 ft. to Point of Beginning.
I hereby certify that at the direction of Vick Will I have surveyed the above described tract and divided and platted it as here shown and that the survey and plat are correct to the best of my knowledge and belief. Sept 12, 1958.
Ralph Skreue
County Surveyor Benton Co. Ark

FILED FOR RECORD
At 2:30 O'clock P.M.
SEP 16 1958
SHERMAN KINYON
Clark and Recorder
BENTON COUNTY, ARK.